

THE  
**ROSE**  
THEATRE

AUTUMN / WINTER  
2025 - 2026

Home of  
THE  
**NONENTITIES**  
*Society*



THE ROSE THEATRE | KIDDERMINSTER  
BOX OFFICE: 01562 743745 | [www.rosetheatre.co.uk](http://www.rosetheatre.co.uk)

# GREETINGS FROM THE CHAIRMAN OF THE NONENTITIES SOCIETY

## Dear Patrons

I would like to take this opportunity to thank you for your patronage, as you make us one of the best supported amateur theatres in the UK. However, that does not mean that we are immune to the economic realities of today. So, this year we have reluctantly had to increase our prices, although I'm sure you will agree that Nonentities shows still represent fabulous value at £15 for adults and £14 for concessions. You will find that our visiting companies are also facing rising costs which are reflected in their pricing too.

Our Artistic Director Richard Taylor and Venue Manager Sharon Tandy have been diligently working to pull together another exciting season of entertainment. Whilst we are excited about all the shows that are coming, we are particularly pleased that we are one of the first amateur companies in the UK to perform Steven Moffat's brilliantly funny show "The Unfriend". It is full of laugh out loud moments having had the likes of Reece Shearsmith and Lee Mack starring

in the West End production. Steven Moffat is a renowned scriptwriter who penned Sherlock for the BBC, as well as collaborating on Doctor Who when it was revived. You really will have a good night out if you come to this one.

On a serious note, we did, regrettably, have some issues with mobile phones last year. You may have noticed a more robust plea to maintain silence during the performance. Our actors work incredibly hard and want to deliver the best possible show we can for you, but concentration is very difficult when they are disturbed by erroneous ringtones and loud rustlings of sweet wrappers from the audience. We must also remind patrons that whilst we will do our best to admit latecomers at a suitable point for main house production, we cannot admit latecomers into the Studio until the interval.

We look forward to welcoming you this season,

## Bob Graham

Chairman of The Nonentities Society

Throughout this booklet

(A) denotes an Amateur production (P) denotes a Professional production

Cover photographs by Colin Hill

Monday 8<sup>th</sup> September - Saturday 13<sup>th</sup> September

## THE UNFRIEND

By Steven Moffat

The Nonentities Society – Main House (A)

What a season opener we have for you! Whilst on holiday, Peter and Debbie befriend Elsa: a lusty, Trump-loving widow from Denver, USA. She's less than woke but kind of wonderful. They agree to stay in touch – because no one ever really does, do they? When Elsa invites herself to stay a few months later, they decide to look her up online. Too late, they learn the truth about Elsa Jean Krakowski. Deadly danger has just boarded a flight to London!

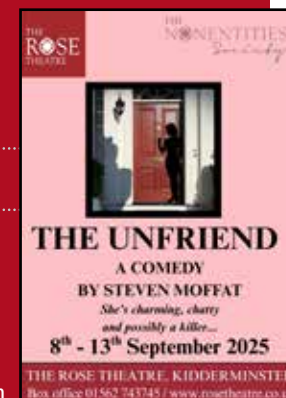
But how do you protect all that you love from mortal peril without seeming, well, a bit impolite? Because guess who's coming... to murder!

Steven Moffat's play The Unfriend takes a hilarious and satirical look at middle-class England's disastrous instinct always to appear nice. It was first performed at the Minerva Theatre, Chichester, in 2022, before transferring to London's West End in 2023. Moffat is well-known for his TV scripts for Dr Who and Sherlock – rest assured you're in for a treat.

The Nonentities are joined by actors from KRYPT, our youth group, to provide that teenage authenticity to the family group!

WARNING: This play contains some adult language which some patrons might find offensive.

★ Curtain up 7:30pm ₤ Standard Ticket Prices



Wednesday 17<sup>th</sup> September – Saturday 20<sup>th</sup> September

## CURTAIN UP ON MURDER

By Bettine Manktelow

Kidderminster Operatic and Dramatic Society – Main House (A)

Following the success of its most recent show, Legally Blonde, Kidderminster Operatic and Dramatic Society are proud to present ... Curtain up on Murder.

An amateur dramatic society gathers in a dilapidated theatre by the sea to rehearse their latest play — but soon, the drama onstage is matched by a far more chilling reality behind the curtain. As tempers flare and secrets unravel, a shadowy figure locks the doors, and one by one, the bodies begin to fall...Curtain Up on Murder is a gripping, darkly comic whodunit that keeps audiences guessing to the final blackout. With tension, twists, and theatrical flair, it's a thrilling night out for mystery lovers and drama fans alike. Can they solve the mystery before the final curtain falls?



This amateur production of "Curtain Up on Murder" is presented by arrangement with Concord Theatricals Ltd. on behalf of Samuel French Ltd. [www.concordtheatricals.co.uk](http://www.concordtheatricals.co.uk)

★ Curtain up 7:30pm ₤ Full £15 (Concessions £14)

Saturday 27<sup>th</sup> September

## THIS CARPENTERS MASQUERADE

Main House (P)

Step into the world of Karen Carpenter with This Carpenters Masquerade — a stunning live tribute celebrating the timeless music and enduring legacy of The Carpenters.

This captivating show takes audiences on an intimate journey through Karen's extraordinary life and career, from the early days of the Dick Carpenter Trio to the global success that made her one of the most beloved voices of all time. Along the way, the show sensitively explores the personal stories and poignant moments that shaped the music.

Featuring a first-class ensemble of musicians and vocalists handpicked for their exceptional talent, This Carpenters Masquerade faithfully recreates the signature sound of The Carpenters. With meticulous attention to detail, the show brings new life to classic hits including "(They Long to Be) Close to You," "Rainy Days and Mondays," "Superstar," and "Top of the World."

Every performance captures the warmth, purity, and unmistakable charm of Karen's voice, combined with the brilliant arrangements crafted by Richard Carpenter. Sit back, relax, and immerse yourself in an unforgettable evening of beautiful melodies and heartfelt storytelling — a true celebration of one of music's most cherished legacies.

★ Curtain up 7:30pm £ Full £25 (Concessions £22)

Friday 3<sup>rd</sup> October

## FLEETWOOD MACHINE

Main House (P)

A lovingly crafted, musically authentic and passionately performed celebration of one of the greatest bands in history, Fleetwood Mac!

Fleetwood Machine stay true to the spirit and sound of the original music, replicating the unique sounds of Lindsey Buckingham & Peter Green's guitars, the intricate drum patterns of Mick Fleetwood and the haunting vocal harmonies that are Fleetwood Mac's trademark...not forgetting the iconic 'F1' bass line, of course!

All the beloved mega-hits plus some brilliant, less well-known songs from the Peter Green era to excite even the most discerning fans! "We want to convey to our audiences the pure joy and excitement we feel when performing this music. Looking forward to sharing some 'Big Love' with you all!"

The show is performed by five experienced musicians who have found each other through their passion for one of the greatest bands in history.

★ Curtain up 7:30pm £ Full £20 (Concessions £19)



Saturday 4<sup>th</sup> October

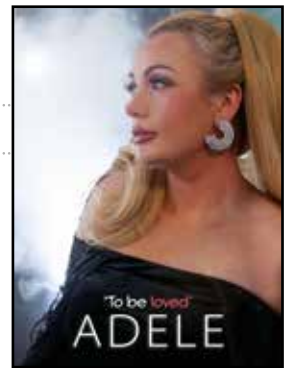
## 'TO BE LOVED' ADELE

Main House (P)

Come and enjoy an evening of dazzling hits from all four of Adele's record-breaking albums, performed by the sensational Chloe Barry. With her bubbly personality and soulful vocals, Chloe delivers an authentic and unforgettable performance. Featuring hits like "Someone Like You," "Rolling in the Deep," "Hello," and "Easy on Me," Chloe also covers songs by Adele's idols, creating a truly unique experience.

Adele fans will adore this show and be left wanting more! Celebrate the music of one of the most influential singer-songwriters of our time. Don't miss it!

★ Curtain up 7:30pm £ Full £24 (Concessions £22)



Monday 13<sup>th</sup> October – Saturday 18<sup>th</sup> October

## ROCK OF AGES

from the book by Chris D'Arienzo.  
Arrangements and orchestrations by Ethan Popp

Carpet Trades Musical Theatre Company – Main House (A)

Rock of Ages is set in 1987 in Los Angeles. A love story unfolds between Drew, an aspiring rock star and Sherrie, a wannabe actress. Their workplace, The Bourbon Room on Sunset Strip, is in danger of closing due to developers wanting to change the city's lifestyle – can it be saved? This is a juke box musical featuring 80's rock band and singers.

The show is known for its witty script and exuberant performances. It has been a popular show both on Broadway and in the West End.

The show is recommended for ages 12+ and contains occasional strong language and suggestive sexual dancing.

Please be aware that smoke effects and strobe lighting will be used during this performance

★ Curtain up: Evenings 7:30pm | Saturday Matinee 2:30pm

£ Evenings £18 | Matinee £17





*Friday 24<sup>th</sup> October*

## **THE MONKEY'S PAW and THE GHOST OF JERRY BUNDLER**

*By W. W Jacobs adapted for the stage by A.A. Birch*

The Clockwork Donkey Theatre Company - Main House (P)

The Company return to the Rose to perform....

### **TWO CLASSIC TALES OF TERROR**

In the MONKEY'S PAW Mr. and Mrs. White are visited by Mr White's friend, who served in the British Army in India. He shows them a mummified monkey's paw and tells them that an old fakir placed a spell on it, so that it would grant three separate men three wishes but with hellish consequences for tampering with fate.

THE GHOST OF JERRY BUNDLER is our second tale of terror. As guests of a small country inn pass the evening telling ghost stories, they discover that the very inn they are staying in has its own resident ghost, Jerry Bundler, who is known for strangling victims while they sleep. Two of the guests proclaim they don't believe in ghosts. One of the guests decides to put them to the test by betting that he can scare them before the night is up.

The show begins at 8pm with a 20 minute interval and is unsuitable for people of a nervous disposition.....

 *Curtain up 8.00pm*  *Full £15 (Concessions £14)*

*Monday 3<sup>rd</sup> November - Saturday 8<sup>th</sup> November*

## **THE BIRDS**

*By Conor McPherson*

The Nonentities Society - Studio (A)

Our first Studio offering is suspenseful, atmospheric adaptation of Daphne du Maurier's enthralling short story exploring the themes of isolation, fear and human fragility in the face of an unknown natural threat. Alfred Hitchcock's film of The Birds in 1963 drew inspiration from this story.

Mysterious masses of birds have begun to attack violently at high tide, driving strangers Nat and Diane to take refuge in an isolated, abandoned house by the sea and form a bond to survive their haunting new circumstance. With no electricity and scarce food, the tension is palpable, and hope is waning. Yet if two is company, three is a crowd, as the sudden arrival of a young woman with a mysterious nature of her own, ruffles feathers in the house and quickly threatens to destroy their so-called sanctuary.

WARNING: This play contains some adult language which some patrons may find offensive. Latecomers will NOT be admitted to this play once the performance has started.

 *Curtain up 7:30pm*  *Standard Ticket Prices*

*Monday 24<sup>th</sup> November - Saturday 29<sup>th</sup> November*

## **THE MIRROR CRACK'D**

*By Agatha Christie - A new adaptation by Rachel Wagstaff*

The Nonentities Society - Main House (A)

In this dynamic new adaptation of Agatha Christie's classic mystery, Miss Marple unravels a web of lies, tragedy and danger when a fading Hollywood film star is murdered.

In 1960s England, a wind of change is blowing through the land. It has even reached the sleepy village of St Mary Mead. There's a new housing estate to make the villagers curious and fearful, and now the village has been thrown into a frenzy by the news that a glamorous American film star has bought the Manor House. Miss Jane Marple, confined to a chair after an accident, is wondering if life has passed her by. Then there is a vicious murder, and Miss Marple must unravel a web of lies, tragedy and danger. This adaptation of Agatha Christie's famous novel brings real emotional depth and psychological insight to a thrilling story of revenge and dark secrets.

Written in 2023 by acclaimed West End playwright Rachel Wagstaff, whose adaptations include The Girl on the Train and Birdsong.

 *Curtain up 7:30pm*  *Standard Ticket Prices*

*Saturday 13<sup>th</sup> December – Sunday 14<sup>th</sup> December*

## **CRACKED: THE NUTCRACKER, BUT NOT AS YOU KNOW IT!**

KRYPT Senior and Junior Groups- Main House (A)

Step into a world where the sugar is sweeter, the toys are odder, and the nuts... well, they don't just crack - they explode.

In this mischievous twist on a festive classic, familiar faces like Clara, Drosselmeyer, and the Mouse King return — but not quite how you remember them. Expect Christmas magic, chaotic charm and big personalities bursting off the stage. No ballet? No bother! Just bold storytelling, curious surprises, and a healthy dose of nonsense.

This is The Nutcracker, reimagined, remixed, and just a little bit unhinged.

Our Junior and Senior groups come together to perform the annual show from KRYPT - Kidderminster Rose Young People's Theatre – do come and enjoy their festive offering!

 *Curtain up: Saturday 7:30pm | Sunday 2:30pm*

 *Adult £10 | Children Under 16 £7 Please ensure that all children have a ticket for this show*



*Tuesday 16<sup>th</sup> December - Friday 19<sup>th</sup> December*

## CHRISTMAS ENTERTAINMENT

*The Nonentities Society - Main House (A)*

We invite you to join us for a night of music and mirth, merriment and mayhem to celebrate Christmas. A firm favourite on the Nonentities calendar, we look forward to seeing our regular patrons and welcoming first timers.

After a varied evening of songs, sketches and reflection you are welcome to partake in a glass of mulled wine and mince pie – included in your ticket price. These nights often sell out quickly so do book early and reserve your favourite seat!

🎭 *Curtain up 7:30pm* 🎫 *Standard Ticket Prices*

*Monday 26<sup>th</sup> January - Saturday 31<sup>st</sup> January*

## ONE FOR THE ROAD

*By Willy Russell*

*The Nonentities Society - Main House (A)*

This wickedly observant comedy by the author of *Educating Rita* explores the quiet desperation and simmering tensions beneath suburban respectability.

Set in a seemingly ordinary English neighbourhood, the story follows Dennis as he grapples with a looming midlife crisis, nosy neighbours, and the relentless monotony of routine.

Reaching the breaking point on his 35th birthday party he packs a rucksack to make his escape, but everyone wants to accompany him and he sinks down in front of the television, defeated. But there's always next year ... and the year after.

With biting wit and a keen eye for the absurdities of modern life, Russell explores how far people will go to preserve appearances - even as their personal lives unravel.

**WARNING:** This play contains adult language throughout and some sexual references which some patrons may find offensive.

🎭 *Curtain up 7:30pm* 🎫 *Standard Ticket Prices*

# OPEN DAY

## SAT 13<sup>TH</sup> SEPTEMBER

### 10:00AM - 2:00PM

### THEATRE TOURS

### COME & EXPLORE!

Are you looking for a new hobby or interest to fill those autumn evenings? Do you have a wish to tread the boards? Or perhaps you'd like to paint the boards.....or light the boards?

It could be that you would just like to have a look behind the scenes at one of your local theatres and snoop around backstage, marvel at the wardrobe department or explore the Aladdin's cave that is the props room.

When you visit the Rose Theatre, everyone you meet from the duty manager to the box office staff, bar and front of house team are all members who give up their time to run this wonderful theatre. In all the Nonentities shows, the set builders, the sound, lighting and backstage crew are members as are wardrobe, props and of course the actors - we are always looking out for new members. If you are interested in joining us, in any capacity, why not come along to our Open Day on Saturday September 13th 10am – 2 pm. We'd love to meet you.

Members will be on hand to give you a guided tour and answer any questions you may have. Our Box Office will also be open to purchase tickets for the season ahead. And, of course, there's **free** cup of tea !

THE  
ROSE  
THEATRE

**FREE  
EVENT**



# FOR YOUR ENJOYMENT AT THE ROSE

## ROSE THEATRE STAFF

We operate with a part-time venue manager - Sharon Tandy. However, all other roles continue to be staffed by volunteer members: Box Office, Bar and Front of House staff. If you would like to join us and be involved in any of our supporting roles, please have a look at the Get Involved section on our website. Ask for an application form at the Box Office. Alternatively, e-mail your details to [membership@rosetheatre.co.uk](mailto:membership@rosetheatre.co.uk) and we will get back to you

## ARRIVAL TIMES

Please don't arrive at the Theatre before 6.30pm - our volunteers need time to get ready for you! Our Refreshment area selling drinks, sweets and ice cream and our well-stocked Bar will be open from 6.45pm. Enjoy drinks before and during the interval. Most nights our Bar is open after the show.

## PARKING

Do allow sufficient time for parking in the Free Car Park on Broadwaters Drive – latecomers cannot be admitted until a suitable break in the performance, or the interval for Studio play. Please respect our neighbours and park considerately, allowing access to driveways, particularly on Broadwaters Drive. Do not park in the spaces directly outside the theatre as these are reserved for staff and cast members.

## DISABLED PARKING

There are four parking spaces reserved for Disabled Badge holders. These MUST be reserved in advance. Disabled Badge details will be asked for together with a name and car registration number. The space will then be allocated and marked with these details. Please DO NOT park in a bay unless it has been reserved for you. There are an additional two disabled bays in the Broadwaters Car Park.

## WHEELCHAIR ACCESS SEATS

The theatre has wheelchair access to the Main Auditorium only and limited seats are reserved for wheelchairs and their carers. These cannot be booked online – please contact the Box Office.

## HEARING LOOP

An induction loop is available for our hard of hearing patrons. Please turn your hearing aid to the T Position.

## CHILDREN AT THE THEATRE

Children under the age of three are not permitted to any evening performances, and there must be no unaccompanied children under 14. All children must have a valid ticket. Please check with our programme details that the show you are booking is suitable for young people. Our Box Office staff are happy to assist

# BOOKING INFORMATION

## Standard Ticket Prices – Concession prices in brackets

	Monday	Tuesday – Saturday
Main House	£14	£15 (£14)
Studio	£13	£14 (£13)

## BOOKINGS

- ◆ PLEASE NOTE THAT OUR CURRENT BOX OFFICE OPENING TIMES FOR BOOKINGS IN PERSON OR BY PHONE ARE: Monday – Friday 10.30am – 12.30pm
- ◆ Book online at [www.rosetheatre.co.uk](http://www.rosetheatre.co.uk) (processing fee of 80p per ticket).
- ◆ We now have the option of an e-ticket or tickets can be collected from the venue.
- ◆ If you require tickets to be posted, a charge of £1.50 is made.
- ◆ With the exception of group bookings, we do not accept reservations.

## CONCESSIONS

These are available as listed for Senior Citizens, Students and Children under 16.

## GROUP BOOKINGS

For every ten tickets purchased for the same Nonentities show, one free ticket given. Please contact the Box Office to arrange these bookings.

## GIFT VOUCHERS

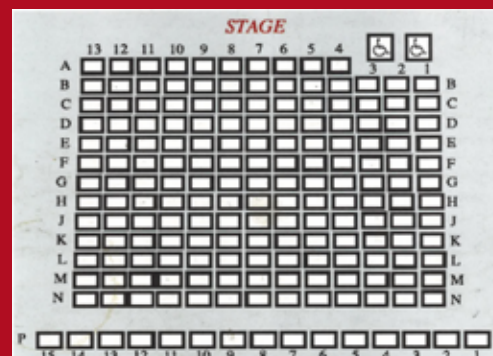
Why not treat someone with a Rose Theatre gift voucher? Available from the Box Office – They can be redeemed against any of our forthcoming shows.

## STUDIO TICKETS

Please note that you will not be given an allocated seat for Studio performances and so arrival before 7.15pm is advisable. There is no wheelchair access to the Studio which is on the First Floor.

## REFUNDS AND EXCHANGES

It is general practice that no refunds or exchanges will be made. We will endeavour to exchange tickets for another night of the same NONENTITIES production. Please contact the Box Office with queries. We reserve the right to make a transaction charge.



## AUDITORIUM

MAIN HOUSE Seats 183  
inc disabled seats

STUDIO Seats 60 Maximum

Both areas now fully air-conditioned for your comfort

Hire The Rose for Plays,  
Concerts, Meetings and Lectures  
– please ask at the Box Office for details.

## SEPTEMBER 2025

*Monday 8<sup>th</sup> September - Saturday 13<sup>th</sup> September*

### **THE UNFRIEND**

By Steven Moffat

The Nonentities Society – Main House (A)

*Wednesday 17<sup>th</sup> September – Saturday 20<sup>th</sup> September*

### **CURTAIN UP ON MURDER**

By Bettine Manketelov

Kidderminster Operatic and Dramatic Society  
– Main House (A)

*Saturday 27<sup>th</sup> September*

### **THE CARPENTERS MASQUERADE**

Main House (P)

## OCTOBER 2025

*Friday 3<sup>rd</sup> October*

### **FLEETWOOD MACHINE**

Main House (P)

*Saturday 4<sup>th</sup> October*

### **'TO BE LOVED' ADELE**

Main House (P)

*Monday 13<sup>th</sup> October - Saturday 18<sup>th</sup> October*

### **ROCK OF AGES**

Carpet Trades Musical Theatre Company –  
Main House (A)

*Friday 24<sup>th</sup> October*

### **TWO CLASSIC TALES OF TERROR**

By W. W Jacobs adapted for the stage by A.A. Birch

The Clockwork Donkey Theatre Company  
Main House (P)

## NOVEMBER 2025

*Monday 3<sup>rd</sup> November - Saturday 8<sup>th</sup> November*

### **THE BIRDS**

By Conor McPherson

The Nonentities Society – Studio (A)

*Monday 24<sup>th</sup> November – Saturday 29<sup>th</sup> November*

### **THE MIRROR CRACK'D**

By Agatha Christie

The Nonentities Society – Main House (A)

## DECEMBER 2025

*Saturday 13<sup>th</sup> December – Sunday 14<sup>th</sup> December*

### **CRACKED: THE NUTCRACKER, BUT NOT AS YOU KNOW IT!**

KRYPT Senior and Junior groups

Main House (A)

*Tuesday 16<sup>th</sup> December – Friday 19<sup>th</sup> December*

### **CHRISTMAS ENTERTAINMENT**

The Nonentities and guests – Main House (A)

## JANUARY 2026

*Monday 26<sup>th</sup> January – Saturday 31<sup>st</sup> January*

### **ONE FOR THE ROAD**

By Willy Russell

The Nonentities - Main House (A)

BOOKING NOW OPEN –  
CONTACT THE BOX OFFICE  
FOR YOUR TICKETS

**01562 743745**

[www.rosetheatre.co.uk](http://www.rosetheatre.co.uk)

[admin@rosetheatre.co.uk](mailto:admin@rosetheatre.co.uk)

Registered Charity no 202008



## LOCATION

The Rose Theatre, Chester Road North  
Broadwaters, Kidderminster  
Worcestershire, DY10 2RX

